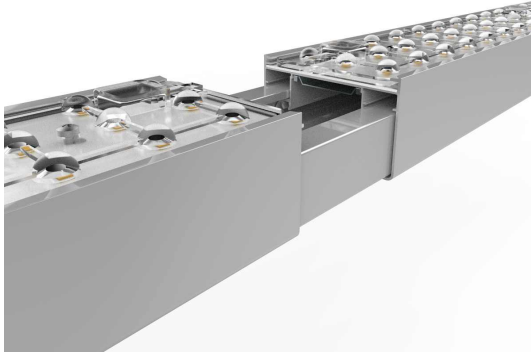




SPECIFICATION

ProLens - Linkable Linear

Product Details



Features

- CE, RoHS certified
- Structure: PC Lens + Aluminum Housing
- IP40
- 45°/ 90°, beam angle optional
- Unique innovation in seamless connection, easy installation and maintenance
- Support 0~10V / DALI dimming
- 90~110lm/w or 115~135lm/w
- 5 years warranty.

Temperature

Operating: -20 ~ +50°C

Storage: -40 ~ +85°C

Application

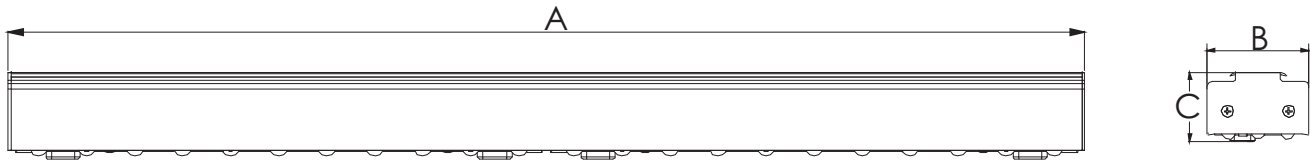
- Office
- Shopping mall
- Airport
- Supermarket
- Workshop
- Warehouse



Product Details



Dimension



length	A	B	C
	mm	mm	mm
NSLL-2-18W	583	69	47
NSLL-4-36W	1163	69	47
NSLL-5-45W	1453	69	47

Data Sheet

Article Number	Size	Power	LEDs	Beam Angle	CRI	AC Input	DC Output	Efficiency(±5%)	Lumen Output
----------------	------	-------	------	------------	-----	----------	-----------	-----------------	--------------

Standard Lumen Version

NSLL-2-18W	583*69*47mm	18W	66	45° 90°	>80	200~240V/100~277V	30~40V	90~110lm/w	1600~2000lm
NSLL-4-36W	1163*69*47mm	35W	132	45° 90°	>80	200~240V/100~277V	30~40V	90~110lm/w	3100~3900lm
NSLL-5-45W	1453*69*47mm	45W	165	45° 90°	>80	200~240V/100~277V	30~40V	90~110lm/w	4000~5000lm

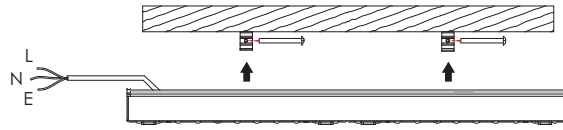
Premium Lumen Version

NSLL-2-18WPL	583*69*47mm	18W	66	45° 90°	>80	200~240V/100~277V	30~40V	115~135lm/w	2000~2400lm
NSLL-4-36WPL	1163*69*47mm	35W	132	45° 90°	>80	200~240V/100~277V	30~40V	115~135lm/w	4000~4700lm
NSLL-5-45WPL	1453*69*47mm	45W	165	45° 90°	>80	200~240V/100~277V	30~40V	115~135lm/w	5100~6000lm

Different wattage / Kelvin colors can be customized.

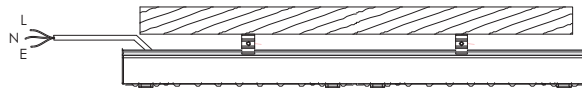
Installation Instructions

■ A: Ceiling Installation



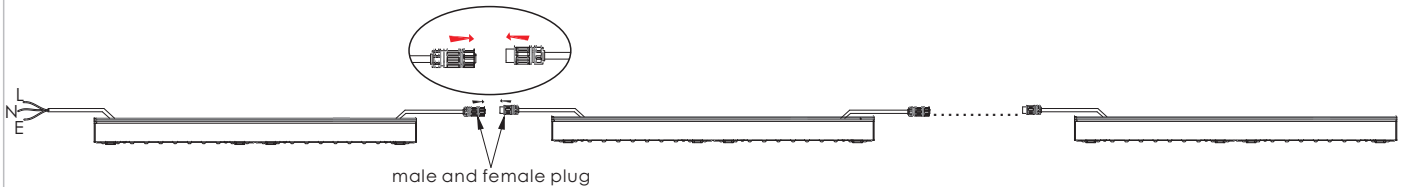
Install lamp to ceiling and fasten with machine screws.

Parallel Connection



Connect to AC input

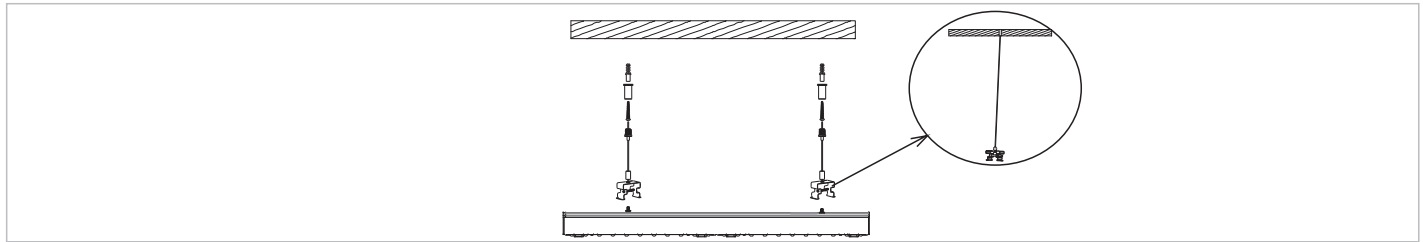
Series Connection



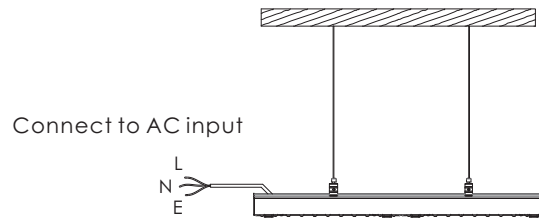
male and female plug

Installation Instructions

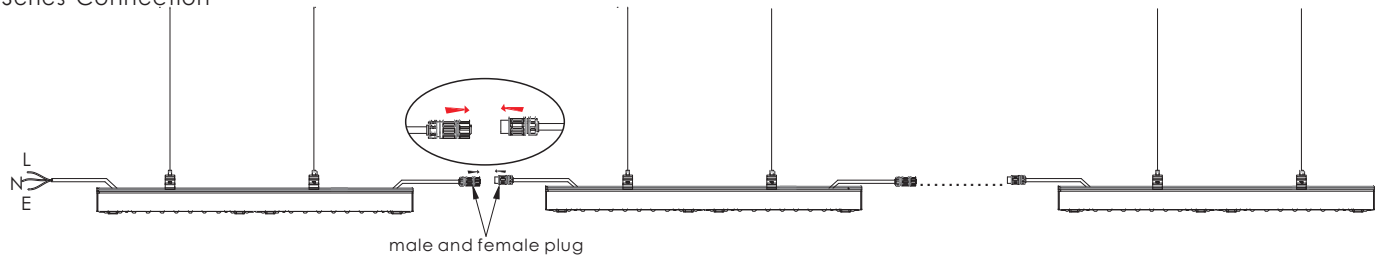
B: Hanging Installation



Parallel Connection



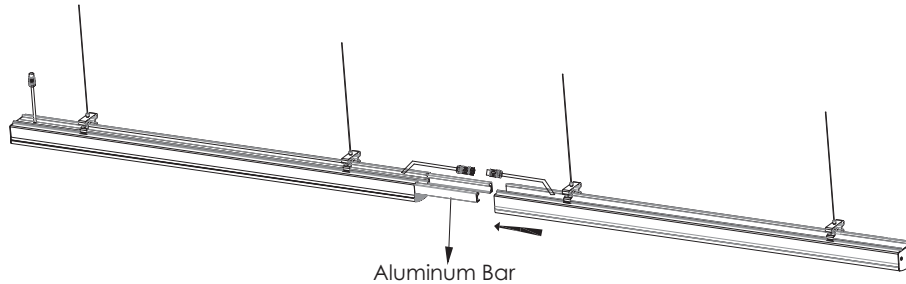
Series Connection



Installation Instructions

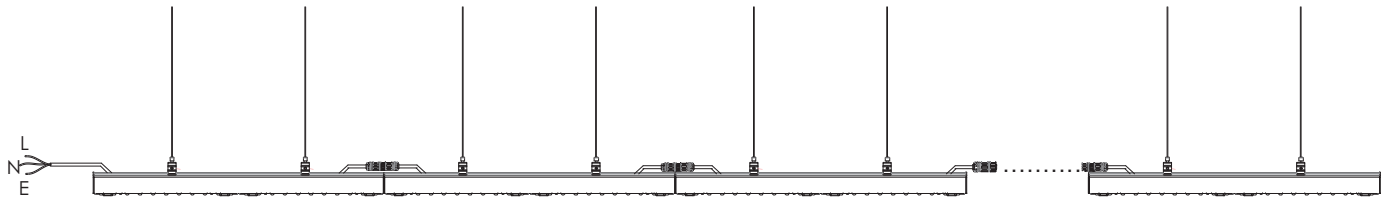
■ C: Seamless Connection

Step 1



Seamlessly connect each lamp by aluminum bar

Step 2 Demonstration Picture



Package

Article Number	Carton Size	PCS/CTN	N.W. (kg)/CTN	G. W. (kg)/CTN	Maximum Loading of		
					20'GP	40'GP	40'HQ
NSLL-2-18W / PL	660*220*230mm	6	8.4	9.5	780	1616	1792
NSLL-4-36W / PL	1260*220*230mm	6	12	13	670	1450	1650
NSLL-5-45W / PL	1580*220*230mm	6	13.8	14.5	402	848	960

