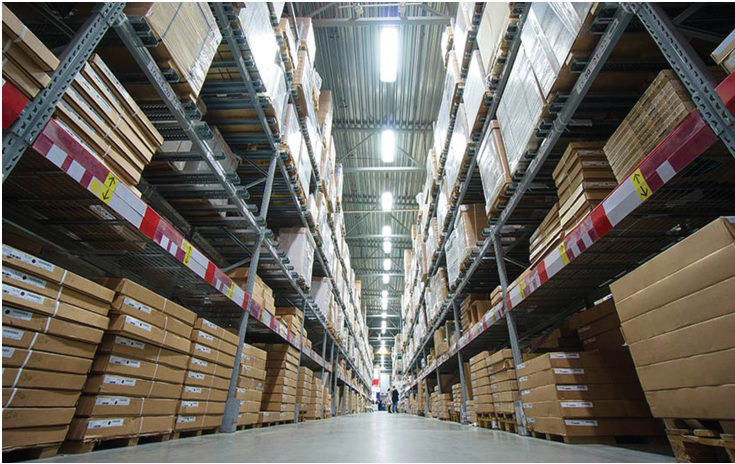




# SPECIFICATION

Mini-Ignite Tri-Proof

## Product Details



### Application

- Parking place
- Corridor / Gallery
- Railway Station
- Warehouse

### Features

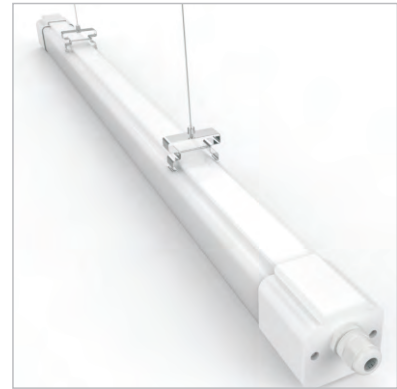
- Compact design, CE, ROHS listed
- Water-proof , Dust-proof, Damp-proof, Vapor-proof
- IP65 IK07
- Mitsubishi PC housing, Anti-UV
- 100~110lm/w or 120~130lm/w
- Long lifespan 50,000hrs
- 5 years warranty

### Temperature

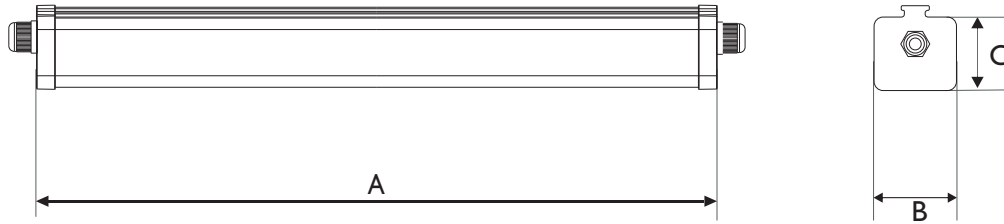
Operating: -20 ~ +50°C  
Storage: -40 ~ +85°C



## Product Details



# Dimension



length	A	B		C
	Min.mm	Min.mm	Max.mm	Min.mm
600	600	69	70	61
1200	1200	69	70	61
1500	1500	69	70	61

## ■ Detachable end cap / Fit for cable self-mounted connection



Loosen the screws by tooling



Open the end cap and insert your local cable to terminals as per corresponding cable marks



Lock the end caps

## ■ Series connection

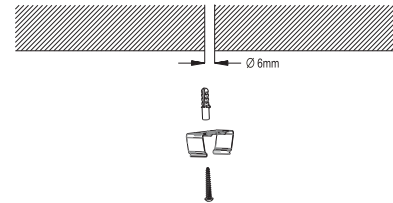


## Ceiling Mounted Installation

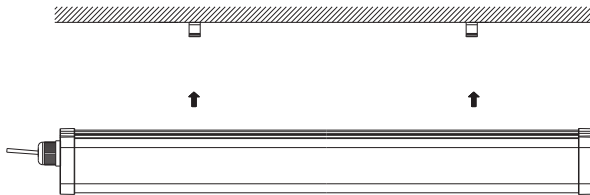
① Drill  $\Phi 6\text{mm}$  holes on the roof/wall.



② Insert  $\Phi 6\text{mm}$  expansion pipe into the hole and fix the bracket by M4 screw.



③ Ceiling Installation.



④ Put the lamp insert into the installed clips on the ceiling accordingly, then rotate the clips inside the lamp to lock it.

